

ERRATUM

S. S. Drachev, N. A. Malyshev and A. M. Nikishin

Drachev, S. S., Malyshev, N. A. & Nikishin, A. M. 2010. Tectonic history and petroleum geology of the Russian Arctic Shelves: an overview. In: Vining, B. A. & Pickering, S. C. (eds) *Petroleum Geology: From Mature Basins to New Frontiers—Proceedings of the 7th Petroleum Geology Conference*, 591–619; doi: 10.1144/0070591.

The updated versions of Figures 6, 10, 11, 13, 15 and 16 were not included in the print version of the proceedings. The updated versions are shown here.

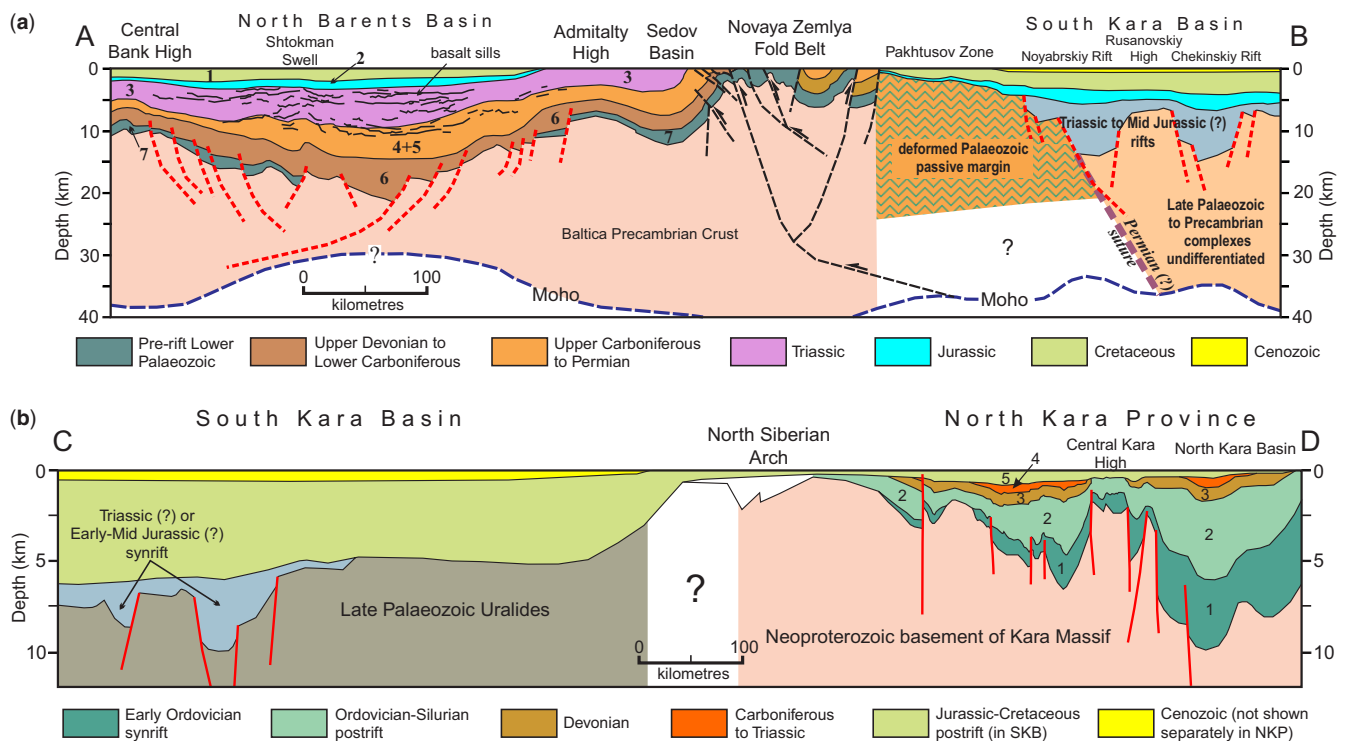


Fig. 6. Schematic geological cross-sections based on re-interpretation of deep seismic reflection and refraction data acquired and published by SMG (Sharov *et al.* 2005; Ivanova *et al.* 2006): (a) through the Eastern Barents and South Kara basins based on seismic transect 2-AP, (b) through the North Kara Province based on seismic transect 3-AP. Location is shown in Figures 3 and 5. Bold numbers from 1 to 6 in (a) and from 1 to 5 in (b) denote seismic stratigraphic units (see the text for the details).

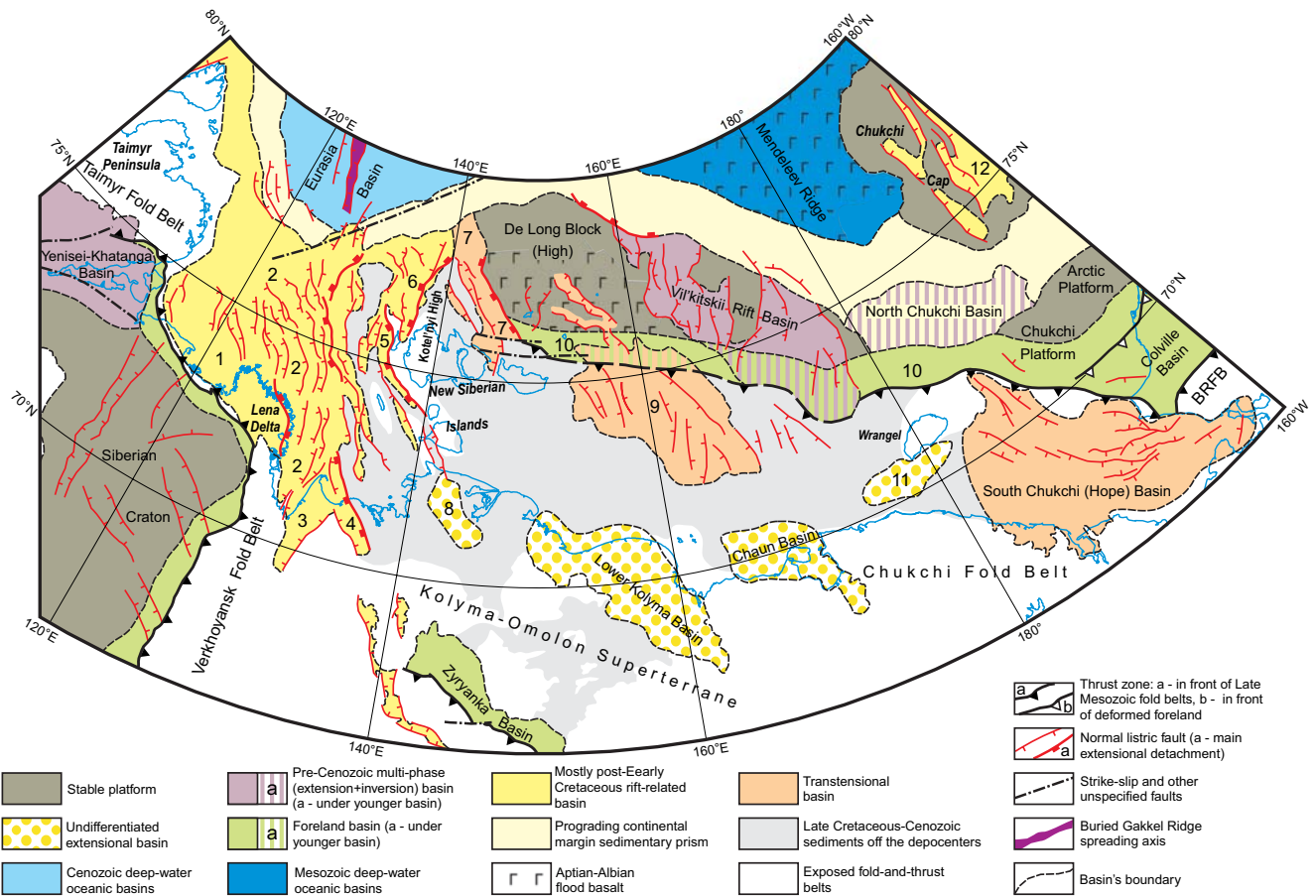


Fig. 10. Main sedimentary basins of the Siberian Arctic Shelf (modified from Grantz *et al.* 2009). Bold numbers denote the following basins: 1, Southwest Laptev Basin; 2, Ust' Lena Rift; 3, Omoloy Graben; 4, Ust' Yana Graben; 5, Bel'kov Rift; 6, Anisin Rift; 7, New Siberian Rift; 8, Tas-Takh Depression; 9, East Siberian Sea Basin; 10, New Siberian-Wrangel Basin; 11, Longa Basin; 12, Northwind Basin. BRFB, Brooks Range Fold Belt.

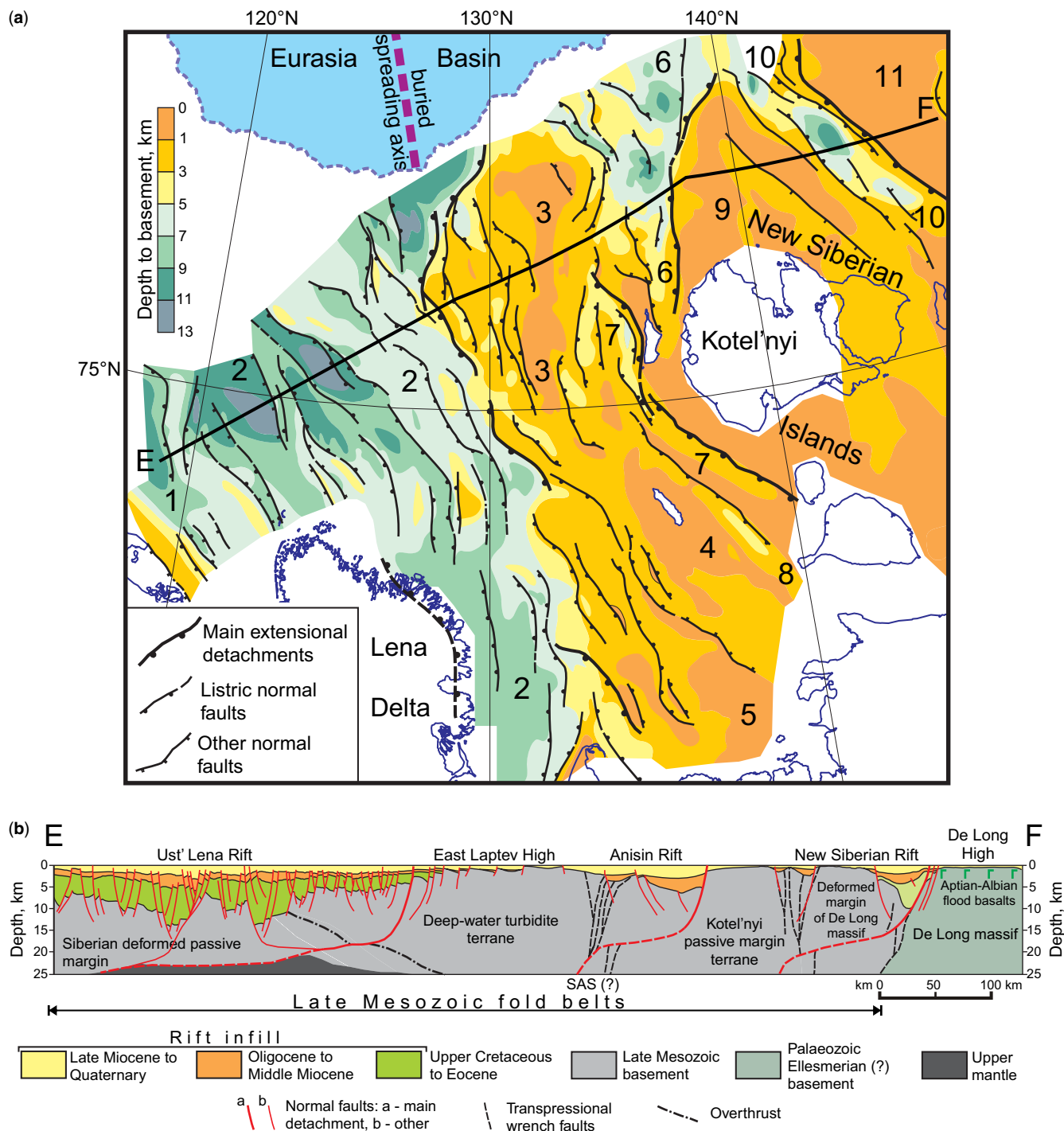


Fig. 11. Structure of the Laptev Rift System: **(a)** simplified depth-to-basement map of the Laptev Shelf based on 2D seismic and ERS-2 gravity data; **(b)** cross-section based on geological data and published BGR regional seismic lines (Franke *et al.* 2000, 2001). Location of the cross-section is shown in **(a)**. Bold numbers in **(a)** denote following elements of the rift system: 1, Southwest Laptev Rift Basin; 2, Ust' Lena Rift; 3, East Laptev Horst; 4, Stolbovoi Horst; 5, Shiroston Horst; 6, Anisin Rift; 7, Bel'kov Rift; 8, Svyatoi Nos Graben; 9, Kotel'nyi High; 10, New Siberian Rift; 11, De Long High. SAS (?) in **(b)** denotes possible offshore projection of the South Anyui Suture.

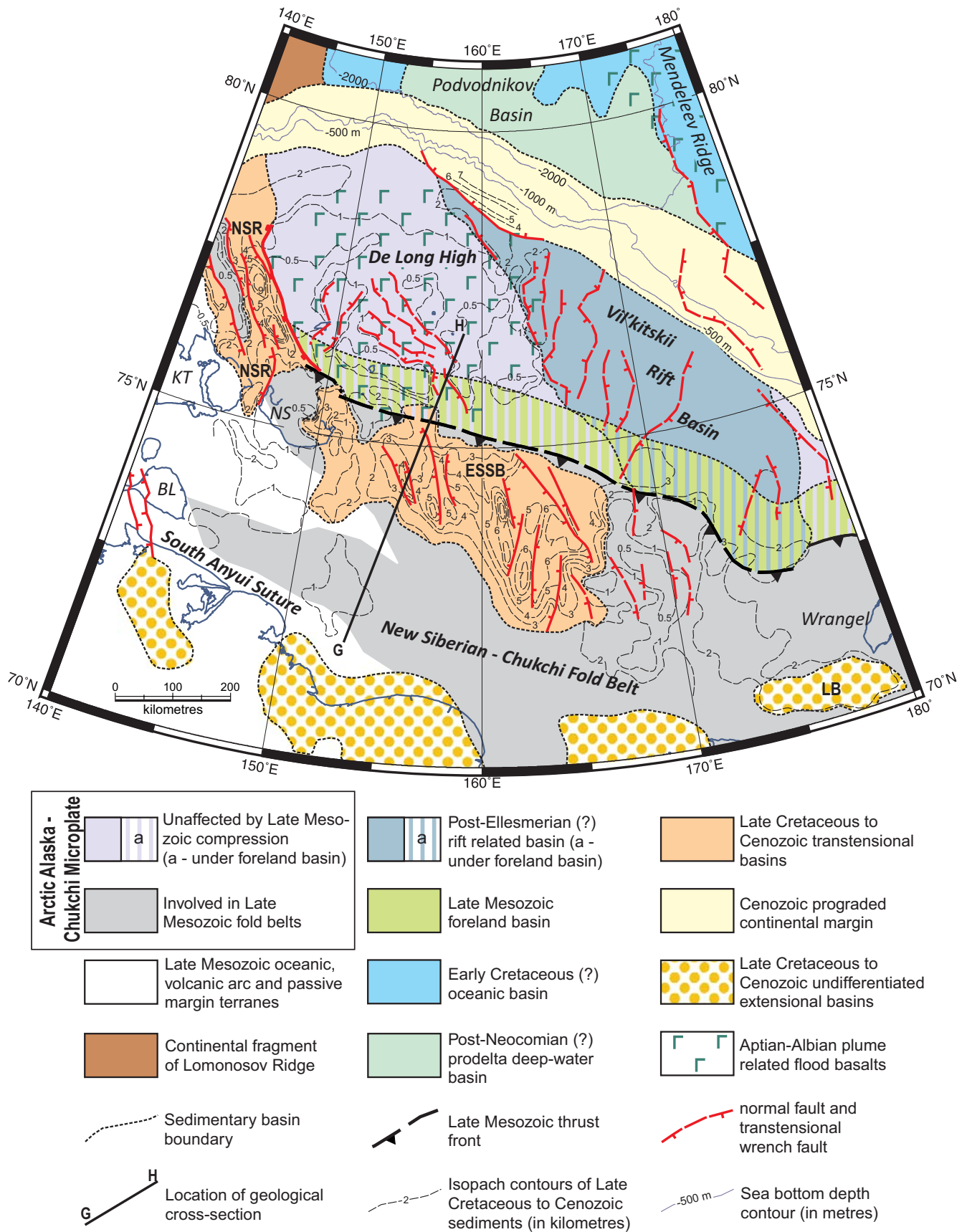


Fig. 13. Main structural features of the East Siberian Sea Shelf. NSR, ESSB and LB denote New Siberian Rift, East Siberian Sea Basin and Longa Basin accordingly. Bold line indexed G–H shows location of a cross-section given in Figure 14. The italic capital letters index the following islands: KT, Kotel'nyi; NS, Novaya Sibir'; BL, Bol'shoi Lyakhov. The accuracy of the scale bar increases towards 75°N.

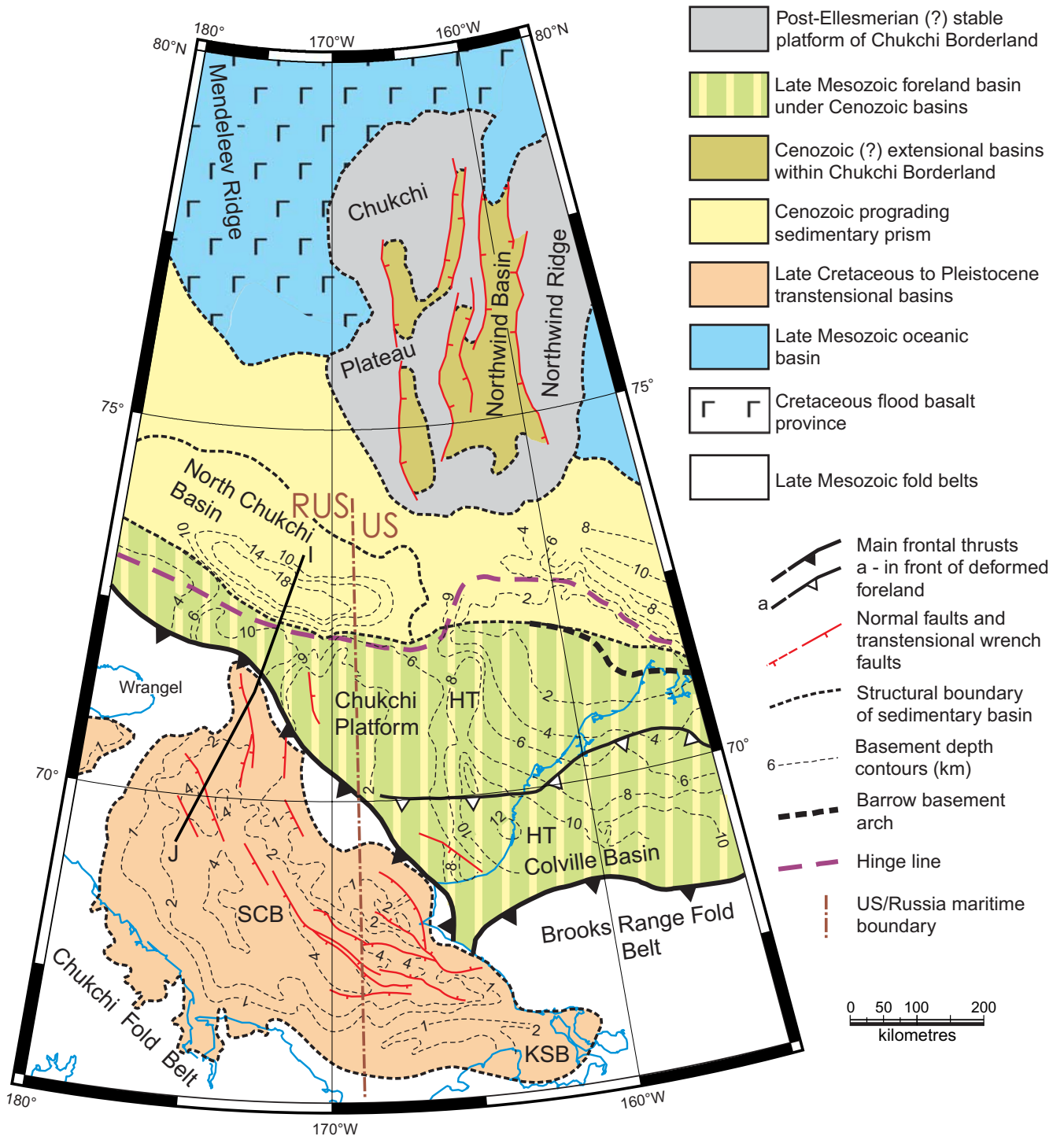


Fig. 15. Main structural elements of the Chukchi Shelf (modified from Grantz *et al.* 2009). Bold solid line labelled 'J-I' shows location of cross-section given in Figure 16. Capital italic letters denote: HT, Hanna Trough; SCB, South Chukchi Basin; KSB, Kotzebue Sound Bay. The accuracy of the scale bar increases towards 75°N.

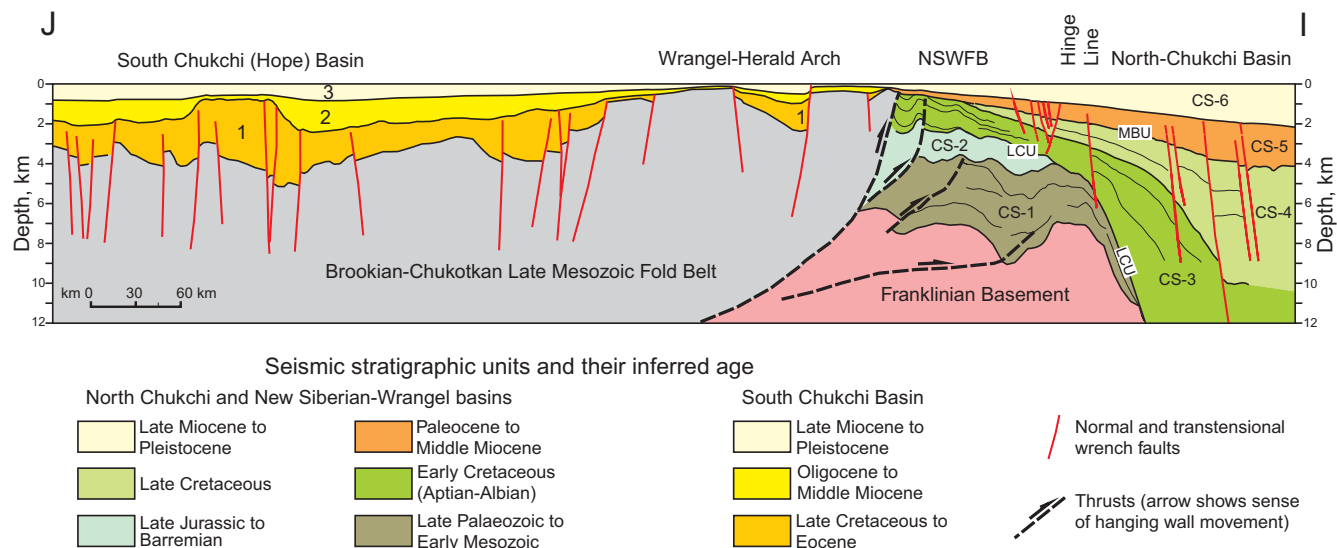


Fig. 16. Simplified cross-section illustrating internal structure and inferred stratigraphy of the South Chukchi and North Chukchi basins. Based on seismic data acquired and published by DMNG and TGS-Nopec (Petrovskaya *et al.* 2008; Verzhbitsky *et al.* 2008) and ERS-2 gravity data. Location is given in Figures 3 and 15. The bold numbers are indexes of the seismic sequences in the South Chukchi Basin after Tolson (1987). The alpha-numeric indexes CS-1 through CS-6 denote seismic sequences identified in the North Chukchi and the New Siberian–Wrangel basins (see text for further details). LCU, Lower Cretaceous Unconformity; MBU, Mid Brookian Unconformity. NSWFB denotes the New Siberian–Wrangel Foreland Basin.